

R U T H S

B E R L I N

S P A C E . S P A R K L E . S P I R I T .

R U T H S

B E R L I N



RUTHS BERLIN: **Space. Sparkle. Spirit.** In the centre of the Langhanskiez district in Berlin-Weissensee.

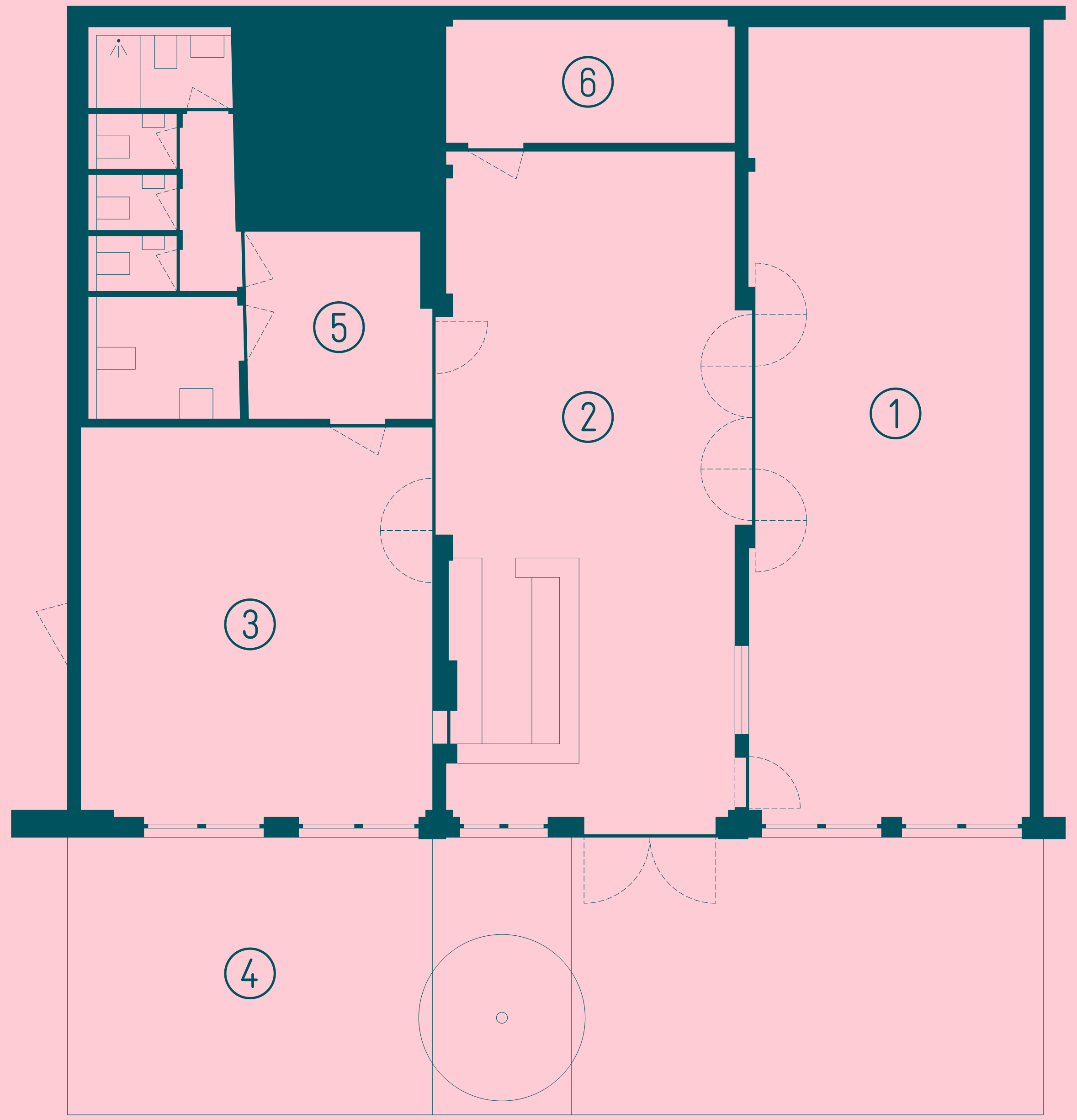
With a **floor space of 230 square metres** and **100 square meters for outdoor area**, RUTHS BERLIN offers beautiful and contemporary rooms with a great deal of space for your ideas and individual types of activities, ideal for corporate events, offsite workshops or business meetings, coaching, photo shootings or network dinners.





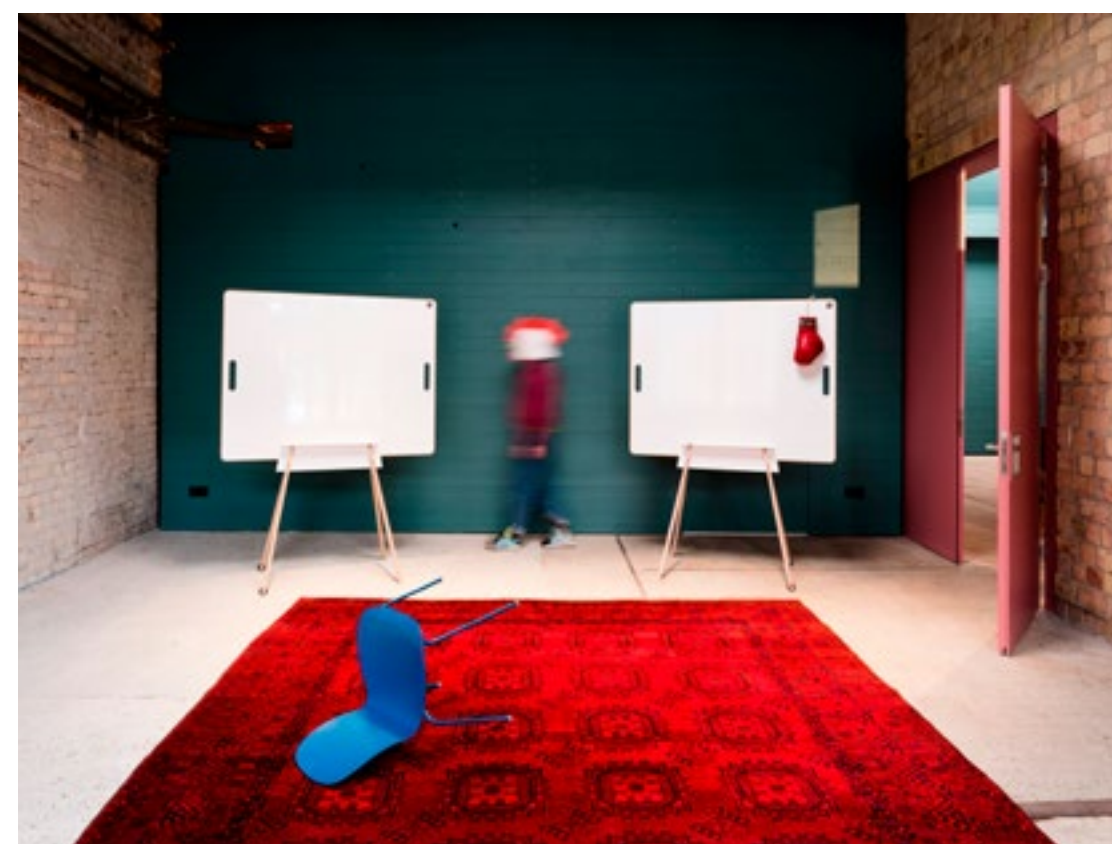


- ① CARL 75 sqm
- ② BAR 60 sqm
- ③ WAYNE 45 sqm
- ④ JARDYLL 100 sqm
- ⑤ GALERIE not for rent
- ⑥ LAGER not for rent



The architecture and design of RUTHS BERLIN take up the historic qualities of this former workshop: raw brick walls meet concrete flooring. A pure look that has been enhanced with a fresh and **characteristic colour concept**. The strikingly curved petrol-coloured wooden ceiling meets floor-to-ceiling rosé-coloured folding doors.

High-quality furniture and room furnishings refine and set accents.



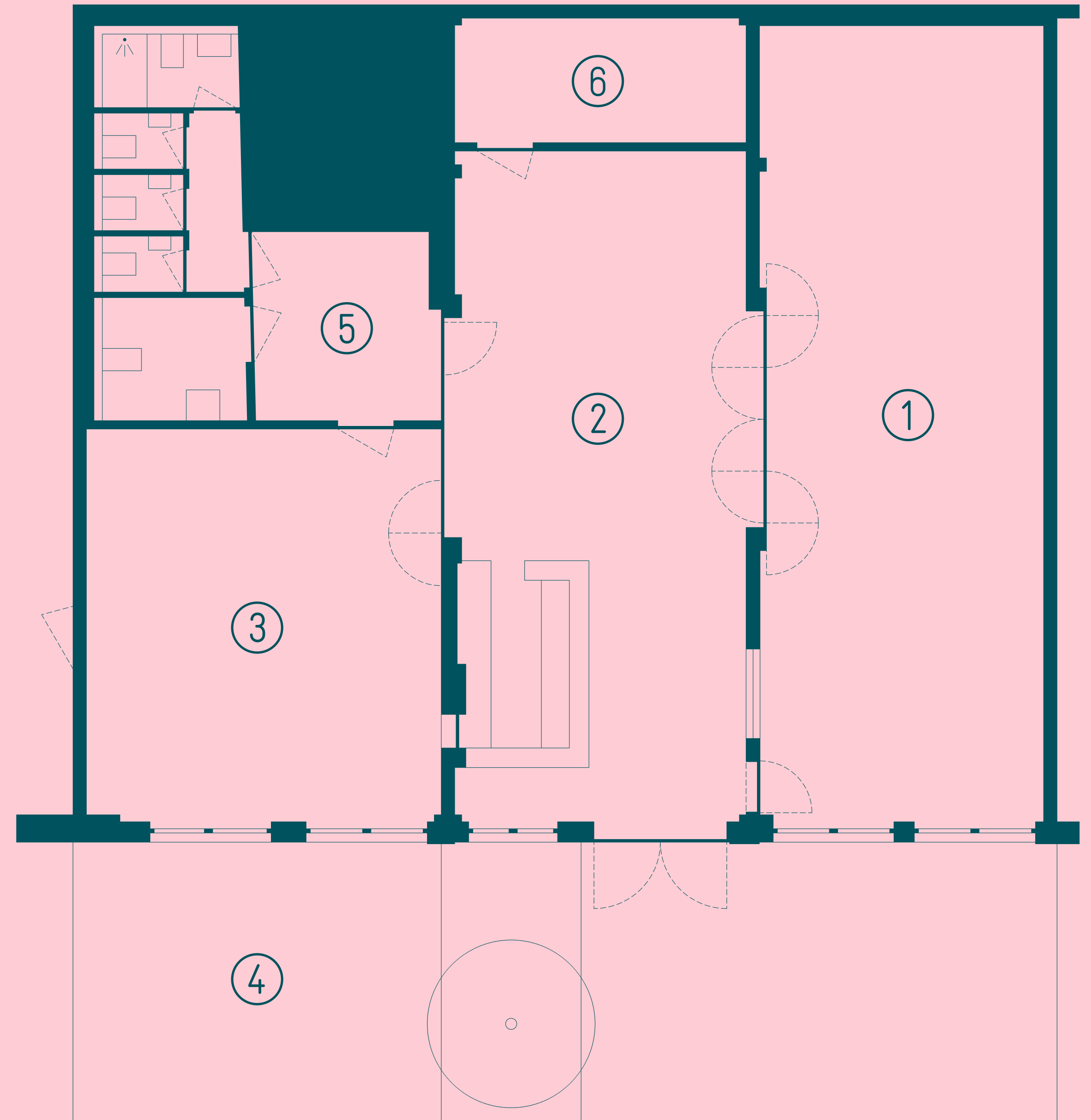
R U T H S

S P A C E

On 230 square metres indoors and 100 square metres outdoors, RUTHS BERLIN offers flexible space with lots of room for your ideas and individual formats.

RUTHS SPACE can be used individually or as an entire unit for groups of up to 60 people. We are fully accessible!

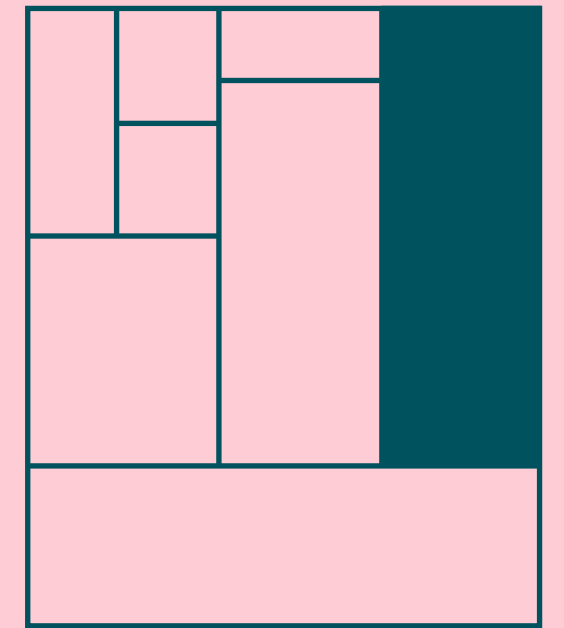
①	CARL	75 sqm
②	BAR	60 sqm
③	WAYNE	45 sqm
④	JARDYLL	100 sqm
⑤	GALERIE	not for rent
⑥	LAGER	not for rent



CARIL

CARL the Great – the largest room in our portfolio – offers lots of space with its **75 square metres**. It not only enables larger groups to come together, brainstorm and jointly develop ideas, but can also hold a long table with all the decorations for fine dining or a networking dinner.

Not enough? CARL's large double doors to the BAR can be opened to create even more space.



Size	75 sqm
Room height	3,00 m – 4,20 m
Capacity	Theatre seating up to 50 people Dinner table up to 28 people Agile working up to 44 people
Features	2 skylights (can be opened), window façade facing the Jardyll, second entrance, VDSL 100 (enhanced WiFi) upon request

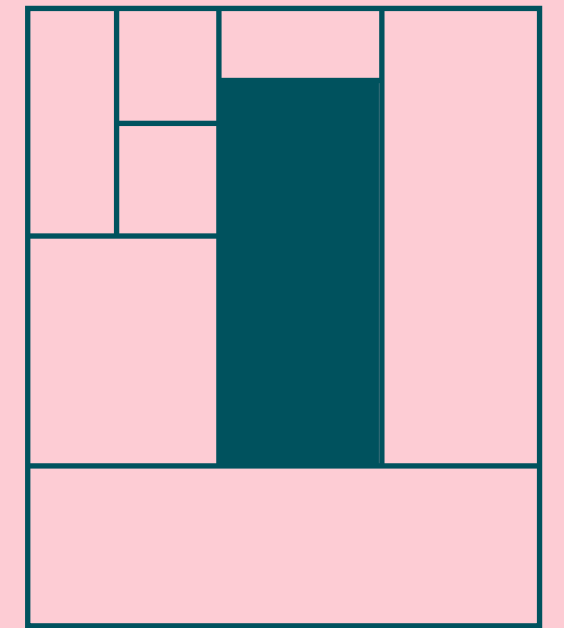




BAR

An absolutely favourite spot **RUTHS BAR: 60 square metres** in size, it can be booked separately or as an additional room in combination with CARL or WAYNE. With its striking copper-coloured counter, it is the perfect location for exclusive tastings, PR and marketing events or simply a drink and get-together in the evening.

And in summer we're happy to open the large entrance gates to our JARDYLL so as to expand the space.



Size	60 sqm
Room height	3,00 m – 4,20 m
Capacity	Stand-up reception up to 30 people Tastings up to 15 people Theatre seating up to 42 people
Features	Skylight and room-height entrance gate opening onto the Jardyll, VDSL 100, High-voltage connection
Features Bar	Copper bar counter (ca. 5,00 m × 2,50 m, Portafilter machine: Wega Airy EVD (2 brewing groups), Eureka Atom Specialty 75 coffee grinder, Gastro dishwasher, refrigerator



R

U

T

H

B

E

R

N

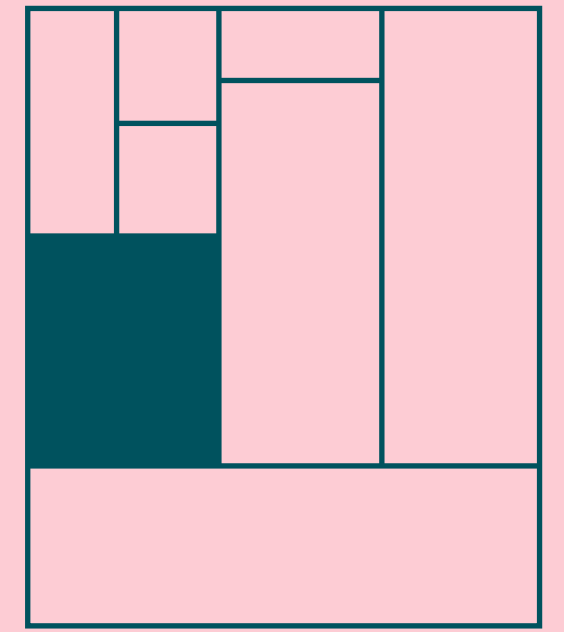
I



WAYNE

For small teams and big events:
with its **45 square metres WAYNE**
is ideal for workshops, individual
training sessions or coaching and
very special customer events.

When combined with CARL and
BAR, this room makes an
excellent break-out zone, lounge
area or fitting room.



Size	45 sqm
Room height	3,00 m – 4,20 m
Capacity	Theatre seating up to 22 people Agile working up to 16 people
Features	Separate entrance and exit to the Jardyll and WC area, skylight and window façades, VDSL 100 (extended WiFi upon request)

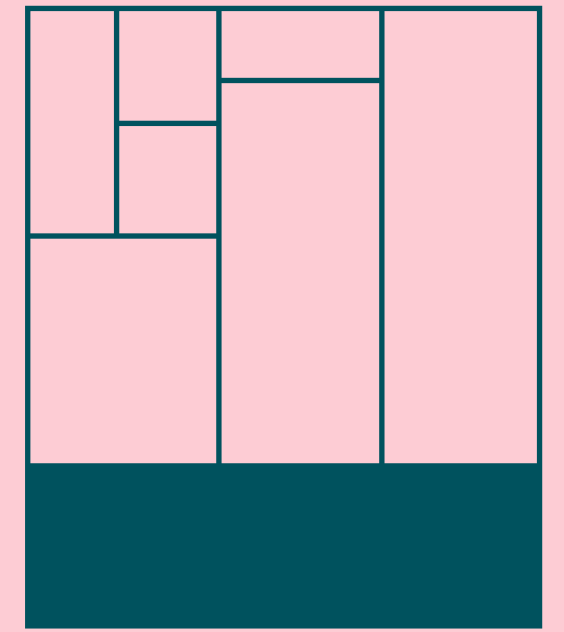




JARDYLL

Our **JARDYLL** is a courtyard garden, urban green space, metropolitan paradise and **100 square metres** of pure happiness.

It allows you to relax in the sun, next to the raised-bed garden or under the trees in the shade: perfect for refreshing breaks, outdoor business lunches or a glass of champagne in the evening.



Size

100 sqm

Capacity

Standing up to 60 people
Seating up to 36 people

Features

2 raised beds and loads of urban green
Outdoor equipment on request









R U T H S

CUISINE & SERVICE

We write cuisine and service in CAPITAL letters.

Irrespective of whether it's about freshly brewed coffee, packed lunches or fine dining: **RUTHS SERVICE and set menus** are discussed with you and then offered as a package.

We can provide advice for planning and furnishings, coordinate requests and, if necessary, lend a helping hand!





R U T H S

T E A M

RUTHS BERLIN was founded by Franziska Eidner and Jeannette Merker. The owners of the EINSATEAM communication agency love beautiful rooms and places that not only bring people together, but are also full of thought-provoking inspiration.

Their love for the location and attention to detail are what knit the entire RUTHS team together.

From location management to cuisine and hospitality: what unites us is **100 per cent passion** for what we do!



R U T H S

C O N T A C T

INQUIRIES & BOOKINGS

Mail: raeume@ruthsberlin.de

Phone: 030-53648917

ADDRESS

RUTHS BERLIN GmbH
Langhansstr. 126
13086 Berlin-Weißensee

INQUIRIES & BOOKINGS

Mail: raeume@ruthsberlin.de
Phone: 030-53648917

ARRIVAL

TRAM M4 → Antonplatz
TRAM M12, M13 → Behaimstraße

